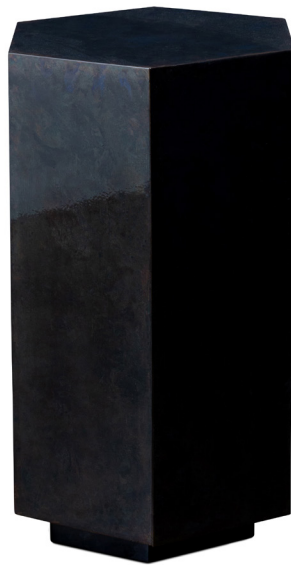
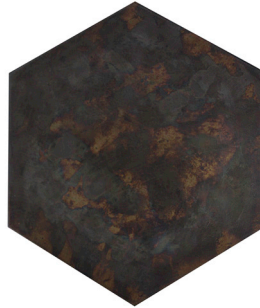


COS
TAN
TINI
DESIGN



ETTORE HEX

14" D x 22"H as shown
Custom sizing available

Named for its hexagonal shape, the Ettore can function as a side table or stool, or grouped together to form larger formations. Shown here in patinated steel, its minimal geometric shape allows the subtle variations of the chosen material's finish to be the focus of the work.